

deceptively simple

remarkably powerful



GEM2MISB

Conversion Software for GEM to MISB format

Webinar

June 28, 2016



Introduction

GEM2MISB– is a software that will convert videos captured with a commercial off the shelf (COTS) camera to MISB compliant KLV format supported on ArcMap's full motion video (FMV).

Advantages:

- Works with any lightweight camera
- Easy to use solution
- Low cost alternative to the cameras that output KLV
- No other hardware necessary



Formats

Supported formats and platforms

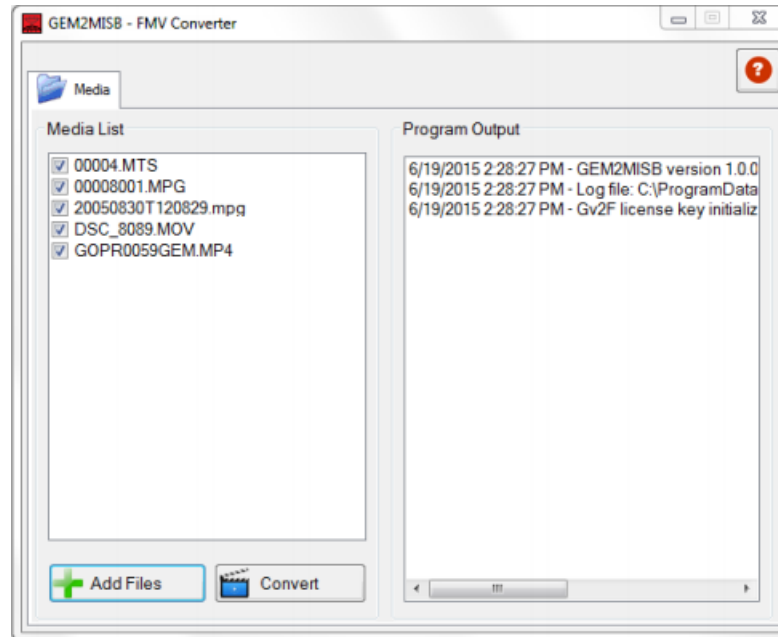
- Video – MTS, MOV, MP4,MPG, MPEG
- OS – Windows XP, 7, and above







Note: It will also import virtually any video with XML sidecar that was produced with a Red Hen product



Interface



Icon	Tab or Button	Description
	Media	Load geotagged media and convert it to KLV format.
	Help	Access the <i>isWhere User Guide</i> in PDF format or get information about support and the latest release.
	Add Files	Add files to the media list.
	Convert	Convert the files in the media list to KLV format.



Work Flow

Step 1- Conversion



Video file



GEM2MISB SOFTWARE

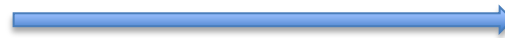


Video file_KLV

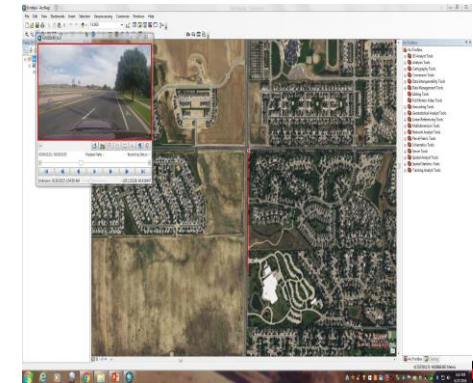
Step 2- Viewing



Video file.KLV



ArcGIS Full Motion Video (FMV)



FFMPEG preprocessing tool may be required for videos that are not MISB compliant. Contact us for a free download.



Resources

GEM2MISB Resources

- Tutorial video - <https://www.redhensystems.com/tutorial-videos>
- Manual - <https://www.redhensystems.com/manuals>
- FAQs- <https://www.redhensystems.com/frequently-asked-questions>



Demo

Live Demo



Questions

CONTACT INFORMATION
info@redhensystems.com

970.493.3952

